

ROTO 40.26 MCSS

MERLO • Rotating Telehandler

SPECIFICATION



SPECIFICATION

- › Hydropneumatic Suspension
- › Tilting Cab (up to 18°)
- › Continuous 360° Rotation
- › MCSS Continuous Slew Safety
- › Permanent Four-Wheel Drive
- › Rear View Camera
- › Boom Camera

ATTACHMENTS AVAILABLE

- › Floating Pallet Forks
- › Fork Extensions
- › Variable Width Man Baskets
- › Crane Hooks
- › Fly Jibs / Fly Jibs with Winches
- › Hydraulic Winches
- › Space System
- › Material Handling

OPTIONAL / SITE EXTRAS

- › Radio Remote Control
- › Auxiliary Boom Hydraulic Service

PERFORMANCE

Lift Capacity (kg)	4000
Lifting Height (m)	26.0
Maximum Forward Reach (m)	22.9
Lift Height at Max Load (m)	13.6
Reach at Max Load (m)	8.1
Load Capacity at Max Lift Height (kg)	1500
Load Capacity at Max Reach (kg)	150
Rotation (degrees)	360

DIMENSIONS & WEIGHT

Unladen Weight (kg)	15445
Length (mm)	6935
Width (mm)	2490
Height (mm)	2946

POWERTRAIN & HYDRAULICS

Engine (make / cyl / HP)	Iveco / 6 / 145
Max Speed (kph)	40
Fuel Tank Capacity (l)	151

KEY FEATURES

MCSS Slew Safety	Yes
Cab Tilt	18°
Drive	Permanent 4WD
Suspension	Hydropneumatic

SAFETY & SITE SETUP

Man Basket Safety: MCSS continuous slew-safety system constantly monitors slew position and load, automatically limiting movements to keep the man basket inside a safe working envelope.

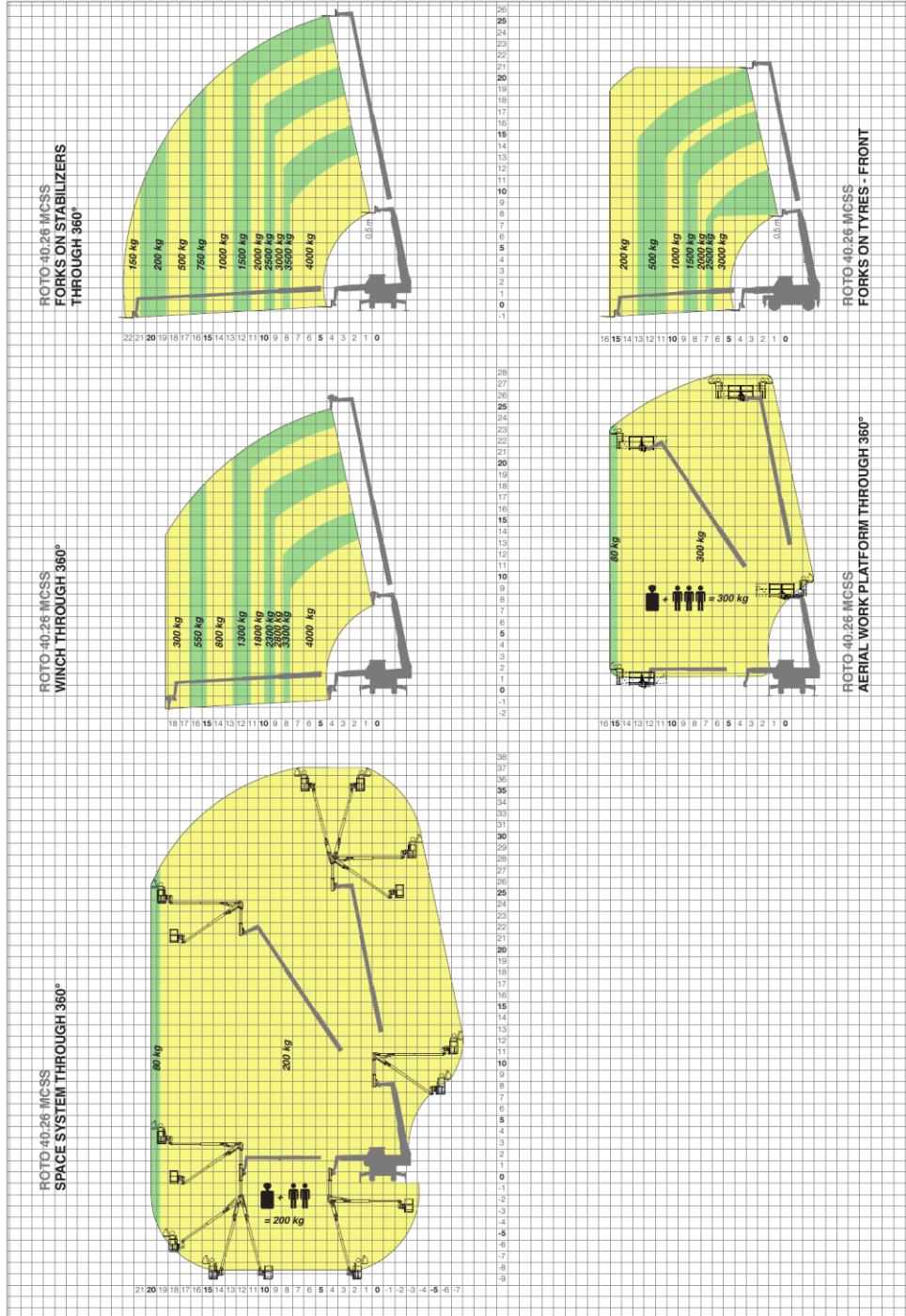
Camera System for the Man Basket: Dedicated boom and basket cameras give the operator a constant live view of the man basket and load — even at full height and reach.

Certified Plastic Stabiliser Pads: Lightweight certified plastic pads spread stabiliser loads and ensure correct, stable positioning of the outriggers on prepared ground.

Walkie-Talkie Communication: Two-way radios keep the operator and the basket / ground crew in constant contact for coordinated, safe lifts.



LOAD CHARTS (METRIC)



Capacities in kg, dimensions in metres. Reference charts only — always verify with the machine plate, attachment, stabiliser position, ground condition and operator manual.